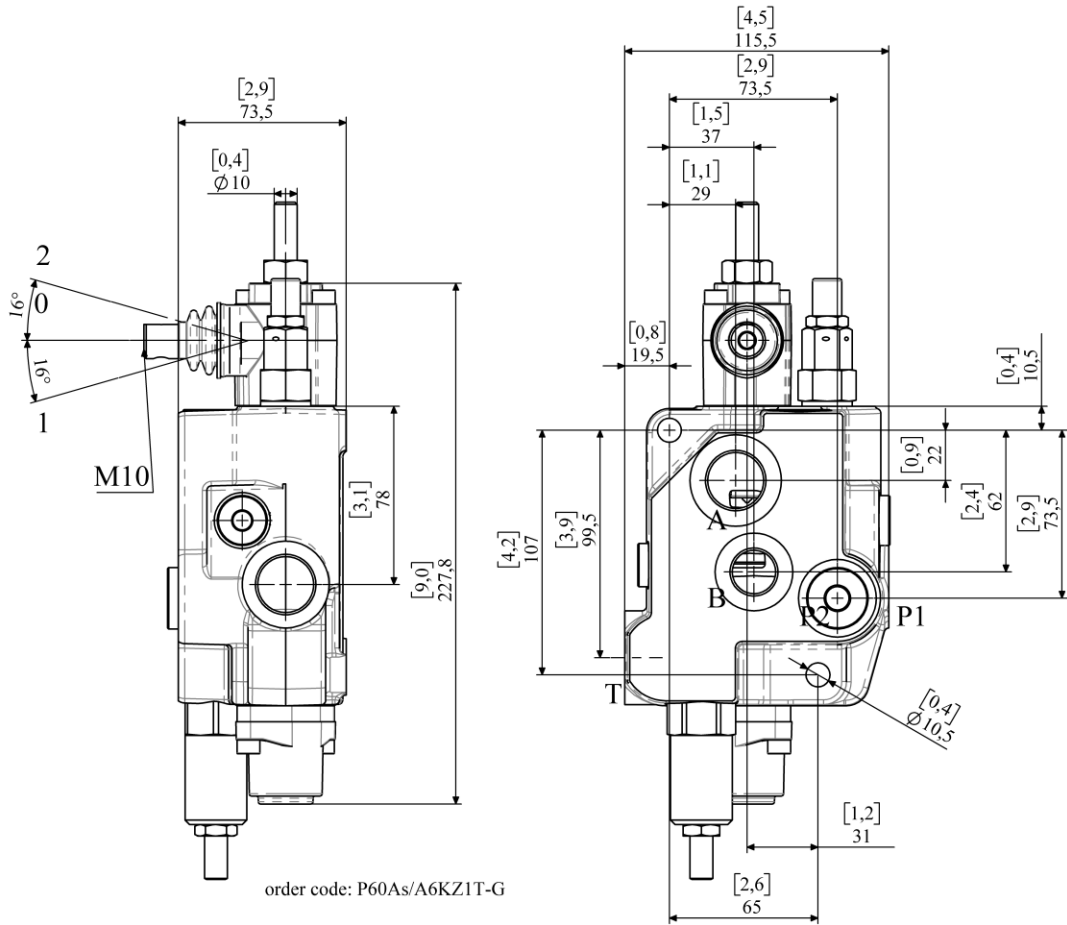


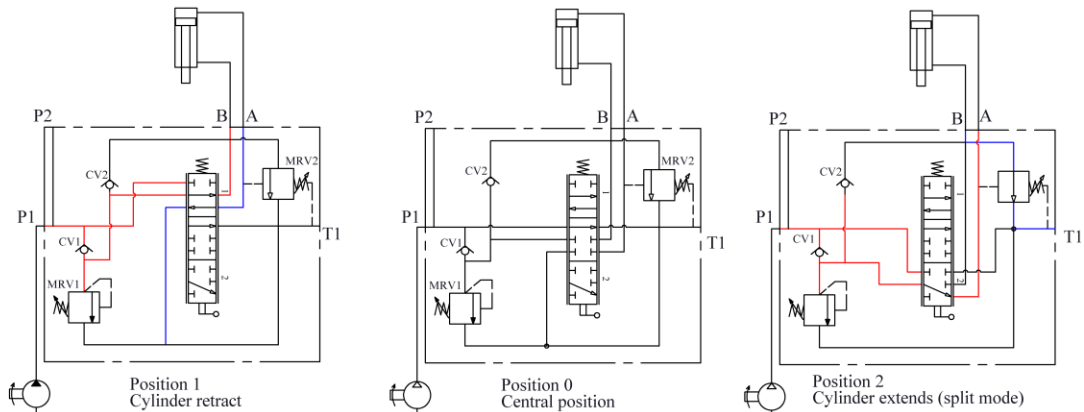
P60As

Valve with autospeed for splitting applications



Applicable in both horizontal and vertical log splitting machines. It is characterised by the function of rapid approach to the log with maximum flow and pressure <70 bar and when the log is reached automatic switch to low flow rate and maximum pressure.

- It is available with automatic return to neutral position (kick out) functionality.
- Maximum pump flow - 55/60 lpm (14.4/15.8 gpm)



Available with UN threads upon request (order code "S")

07/2020